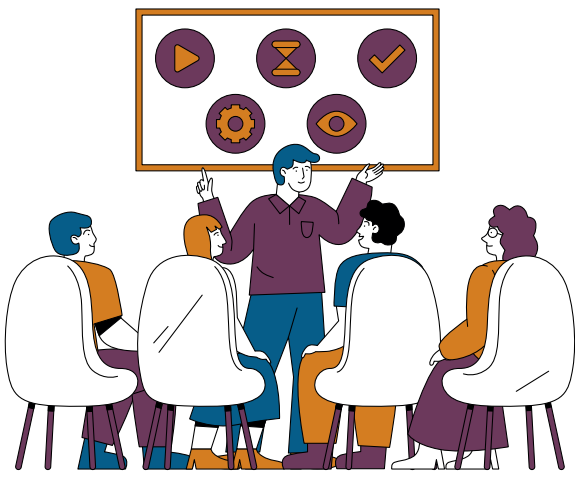




February 2024

## 1 Reminders

- Final reports are due to the School Children's Trust by **MARCH 1st**.
- Upcoming Plans are due to the School Children's Trust by **APRIL 15th**.
- Review the [timeline](#) of requirements for the School LAND Trust Program.



## 2 Trainings

- 17 minute [video](#)- School LAND Trust Plan Writing
- [Flyer](#) of School LAND Trust Plan Writing (main points)

## 3 Past Training Links

- [LEA Assurance](#)
- Plan amendments informational [video](#) and "How To" upload an amendment [video](#)
- FOR ELEMENTARY ONLY: Early Literacy Connection, Resources, and Data [Video](#) and Informational [Flyer](#) for School LAND Trust Plans



## 4 Council Signature Requirement

Council Forms must be:

- An LEA Prepared Form
- Collected at the Council Plan Approval Meeting (or after)
- Provided to approving entity (District School Board or Charter Governing Board) with the Upcoming School Plan
- Kept for at least three years

[schoollandtrust@schools.utah.gov](mailto:schoollandtrust@schools.utah.gov)