


**ONLY GOING
UP
FROM HERE!**

FAMILY ENGAGEMENT 2025-26




CURRENT SCHOOL CHALLENGES

GOOD SCHOOL ATTENDANCE MEANS...



ELEMENTARY STUDENTS Read well by the end of 3rd grade	MIDDLE SCHOOL STUDENTS Pass important courses	HIGH SCHOOL STUDENTS Stay on track for graduation	UNIVERSITY STUDENTS Earn their degrees	WORKERS Succeed in their jobs
---	---	---	--	---





Too many absences - excused or unexcused - can keep students from succeeding in school and in life. How many are too many? 10% of the school year - that's 18 missed days or 2 days a month - can knock students off track.



ATTENDANCE



BEHAVIOR

<p>1</p> <p>BELOW PROFICIENT: I still need help and support from my teacher to do the simpler parts of the standard.</p> 	<p>2</p> <p>APPROACHING PROFICIENT: I am getting close to meeting expectations and I can do the simpler parts of the standard independently.</p> 	<p>3</p> <p>PROFICIENT: I meet the expectations described in the standard and can do them independently.</p> 	<p>4</p> <p>HIGHLY PROFICIENT: I have a deep understanding of the standard and I can demonstrate it in complex ways.</p> 
--	--	--	--

PROFICIENCY



ENROLLMENT

DECLINING ENROLLMENT



TEACHER RETENTION



CHANGING DEMOGRAPHICS

CURRENT RESEARCH

~Mapp, Henderson, Cuevas, Franco & Ewert
Family Engagement Helps Everyone Win!



STUDENTS WIN

Students feel supported and reassured when the most important adults in their lives work together to help them learn.

EDUCATORS WIN

Teachers gain insight into their students' strengths and challenges, allowing them to enrich their instructional plans.

FAMILIES WIN

Families gain skills and confidence in helping their children learn. Additionally, parents being to grow their leadership abilities in the school setting.

EVERYONE WINS

Because there is a better school climate, higher teacher retention, increased student attendance, better classroom behavior, higher scores on ELA tests, better curriculum, and programs. Schools are more responsive to concerns and have a better reputation in the community.

“Trusting partnerships with families is the closest thing we have in education to a magic bullet. When families and schools are on the same page and working together, it creates a support system to help students maximize their academic success!”

RUSSELL
UP Actor and Family Engagement Enthusiast



Self Assessment

How much do you agree with the following statements? **Please circle 1 answer for each statement.** Answer as honestly as you can. Your responses will be completely anonymous.

Fold your paper in half when you are finished.

1	All families have dreams for their children and want the best for them.	Strongly Agree	Agree	Disagree	Strongly Disagree
2	All families have the capacity to support their children's learning.	Strongly Agree	Agree	Disagree	Strongly Disagree
3	Families and school/program staff should be equal partners.	Strongly Agree	Agree	Disagree	Strongly Disagree
4	The responsibility for building and sustaining partnerships between school, home, and community rests primarily with school/program staff, especially school/program leaders.	Strongly Agree	Agree	Disagree	Strongly Disagree
5	All students have the potential to grow, learn, and become successful.	Strongly Agree	Agree	Disagree	Strongly Disagree



So What is Family Engagement?

“Family engagement is a **full, equal, and equitable partnership** among families, educators, and community partners to promote children’s learning and development from birth through college and career.”



3 levels of Family Engagement

Good - Better - Best

Involvement	Engagement	Partnerships
<ul style="list-style-type: none">• Usually a one way interaction• The family member attends an event and gains information about the school, the student or the classroom	<ul style="list-style-type: none">• Builds the capacity of the family member to support learning• Builds a relationship of trust• Links the interaction directly to improving learning	<ul style="list-style-type: none">• Reciprocal interaction• Family and staff learn• Family uses new skills to support and advocate for student learning

**Some
Impact**



**Higher
Impact**

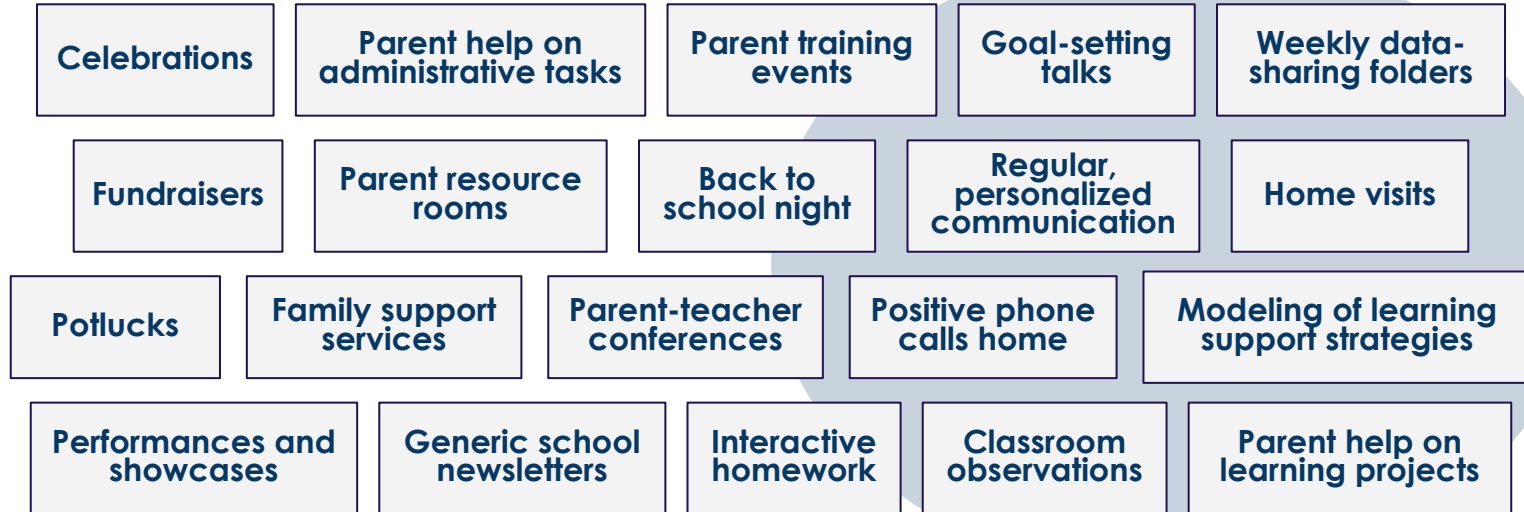
Family Engagement Practices

*Courtesy of the Flamboyan Foundation

Some
Impact



Higher
Impact



Building Belonging School Partnerships:

1
Welcome

Developing
Relationships
with families

2
Honor

Deepening
Relationships
with families

3
Partner

Link to
Learning &
Sustaining
Relationships

Questions to Ask Yourself:

- Where is your school at on the road to belonging?
- Where would you like to get to this year?
- How can we help support you to get there?



MICROINTERACTION

S Granite District research revealed:

- A high **majority** of **positive** and **negative feelings** towards schools **stemmed** from an **interaction that lasted less than one minute** (microinteraction)
- Value every moment because it has a lasting impact with students and their families



How does one go from here to here?



Building Belonging School Partnerships:

1
Welcome

Developing
Relationships
with families

2
Honor

Deepening
Relationships
with families

3
Partner

Link to
Learning &
Sustaining
Relationships

Questions to Ask Yourself:

- Where is your school at on the road to belonging?
- Where would you like to get to this year?
- How can we help support you to get there?



INVOLVEMENT OR ENGAGEMENT?

“A School striving for **family involvement** leads with its mouth - identifying projects, needs, and goals and then telling parents how they can contribute. A school striving for **family engagement**, on the other hand, tends to lead with its ears - listening to what parents think, dream, and worry about. The goal of family engagement is not to serve clients but to gain partners.”

- Larry Ferlazzo, Author and Public School Teacher



INVOLVEMENT

A School Striving for Family Involvement
LEADS WITH ITS MOUTH



INVOLVEMENT:

The imparting or exchanging on information or news.

THEY CAN CONTRIBUTE

The goal is to **SERVE CLIENTS**



VS

ENGAGEMENT

A School Striving for Family Engagement
LEADS WITH ITS EARS



ENGAGEMENT:

The act of engaging; the state of being engaged; emotional involvement and commitment.
dream and worry about.



Goal is to **GAIN PARTNERS**

AM I INVOLVING OR ENGAGING?



Building Belonging School Partnerships:

1
Welcome

Developing
Relationships
with families

2
Honor

Deepening
Relationships
with families

3
Partner

Link to
Learning &
Sustaining
Relationships

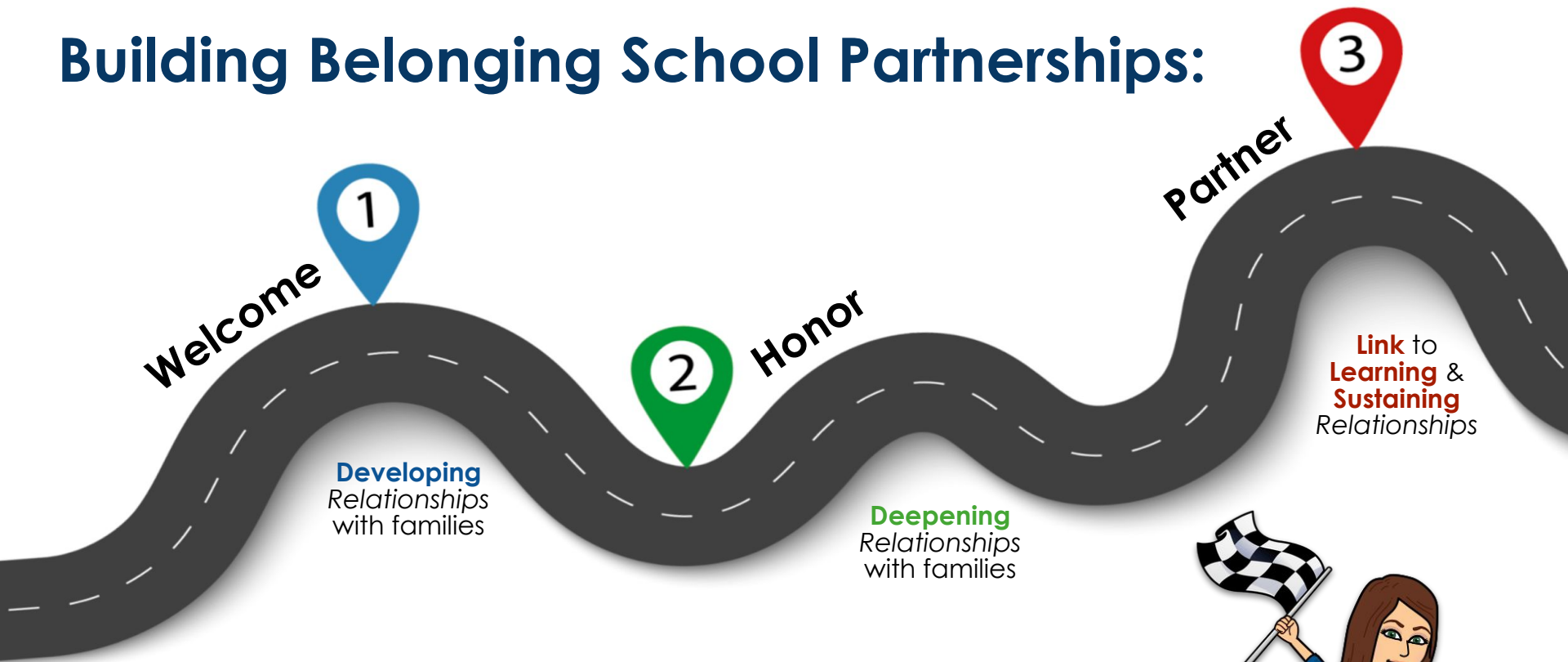
Questions to Ask Yourself:

- Where is your school at on the road to belonging?
- Where would you like to get to this year?
- How can we help support you to get there?





Building Belonging School Partnerships:



Questions to Ask Yourself:

- Where is your school at on the road to belonging?
- Where would you like to get to this year?
- How can we help support you to get there?

