

## WHO ARE WE?

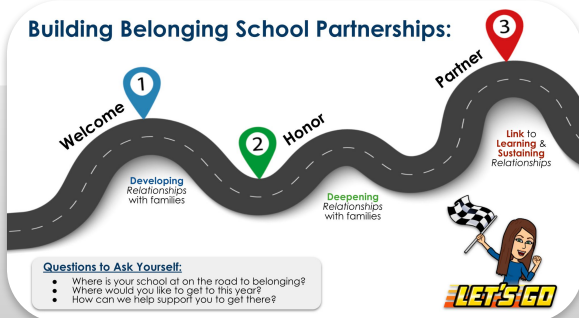
We are the Granite District Family Engagement support team. Our aim is to help build the schools' and families capacity in creating partnerships to support student growth and success.



## HOW DO WE HELP?

We support schools in their family engagement efforts to build belonging schools. A belonging school is one where families are academic partners and help make decisions about the school. To create a belonging school we've created a roadmap for schools to follow. There are 3 steps:

- Welcome
- Honor
- Partner



This trifold will explore all 3 steps and how we in Granite support families and schools to ensure student academic success.

## OUR MISSION

Our goal is to help build the schools' capacity in creating co-partnerships between teachers & families to engage in supporting student success and build family efficacy.



## GRANITE DISTRICT FACE DEPARTMENT

FAMILY AND COMMUNITY ENGAGEMENT

### DISTRICT ADDRESS:

2500 S. State Street  
South SLC, UT 84115

### MAIN OFFICE PHONE:

(385) 646-7416

### MAIN OFFICE HOURS:

Monday - Friday  
8:00 a.m. - 5:00 p.m.

**DIRECTOR:** Jadee Talbot

**ASSOCIATE DIRECTOR:** Shawn Nielsen

**ADMINISTRATIVE ASSISTANT:** Sabrena Kohler

# WELCOME:

## DEVELOP RELATIONSHIPS

Granite District believes that family members are a child's first and most important teacher through life. As such we recognize our responsibility to reach out to our families. How do we do this? See below:

### Strategies To Welcome Families:

#### Relationship Building Home Visits:

In Granite we train teachers to visit families in their homes. The purpose is to build trusting relationships to support student success.

#### Current research on visits speaks for itself :

- ❑ 75% of teachers report better behavior from students who have had a home visit (Stetson, et al 2012).
- ❑ Sheldon and Jung (2018) report that schools who systematically visit 10% of their students' families saw that these students were...
  - ❑ 22% less likely to be chronically absent.
  - ❑ 35% more likely to be proficient on ELA tests.

#### Building Relationships Phone Call:

- ❑ Home Visits are not required. Some are uncomfortable in participating, whether parent or teacher. As such, we also train our teachers to perform a welcoming phone call for families. Use the QR code to check out the script we share.



SCAN ME



# HONOR:

## DEEPEN RELATIONSHIPS

After reaching out to build trusting relationships with our families, Granite schools continue to strengthen these relationships through continuous responsive communication and promoting family efficacy.

### Strategies to Honor Families:

#### Communication Tools:

In Granite we are striving to implement a 2-way communication tool in all of our schools. What will this tool do for families and students? It helps promote family efficacy in supporting by making them aware of what is being taught and motivates to students to be more engaged in learning. Take a look at the research.

#### Research on Communication Tools:

- ❑ Kraft and Dougherty (2013) reports families who received text and/or phone communication consistently from teachers, had students who...
  - ❑ Participated more in class
  - ❑ Remained on task
  - ❑ Completed homework

#### Questions for Kids & Online Lesson Share:

In Granite, we strive to help our families develop efficacy to engage in and support their child's learning. We do this by training teachers to:

- ❑ Text families questions of what their child learned that day to ask them.
- ❑ Video and share lessons online for families to see how they were taught.

Why do we do this? Check it out!

#### Current Research on Family Efficacy:

- ❑ Hover, Dempsey, et al (2005) share that families engage when they know why they should and that they can make a positive educational difference in their child's' life. This is Family Efficacy.

# PARTNER:

## CONNECT YOUR FAMILIES TO THEIR CHILD'S ACADEMIC LEARNING:

In Granite we know families are the key to student achievement. If our families know what their child is learning and how they can help, they are more likely to support and engage their student in that learning. We train and support our schools through the following strategies:

### Strategies to Partner with Families:

#### Family Friendly Partnership Plans (FFPP):

What is Granite's FFPP? The FFPP is a plan that schools create by identifying the 3 most vital standards families can help with their child's learning at home in their current grade. It also identifies strategies and tools families can use at home to help with each standard.



SCAN ME

#### Academic Learning Nights:

Granite trains schools to use their FFPP plans to guide their family nights. Schools design literacy, math, and science events around the 3 vital standards for each grade level identified in the FFPP. Then families participate in activities that promote efficacy in families learning more strategies to support teaching their kids at home.

#### Super Family Academy:

Granite's Super Family Academy is a class held at our family centers for families with students in K-3rd grades. The purpose is to help teach families what their child is learning in the classroom and give them strategies to support that learning at home.

Why do we do this? Check it out:

#### Current Research on Academic Partnering:

- ❑ Vanhooris, et al., (2013) found that collaborating academically with families led to significant gains in reading and math.